

# ARC Universal Adapter -CV/-TIG

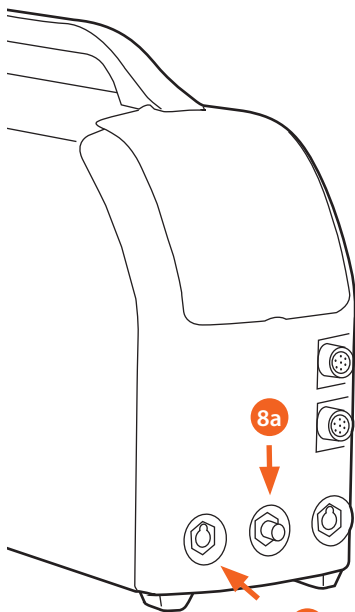
Quick  
guide

The ARC Universal Adapter allows you to use Kemppi's WeldEye welding management software for monitoring any welding machine equipped with a DIX connector. For more information about Kemppi's welding quality management solutions, please visit [www.weldeye.com](http://www.weldeye.com).

1. Connect the ARC Universal Adapter to the power source in series with the earth return clamp. Push the connector and turn clockwise until it's firmly seated.
2. Connect the earth return cable to the ARC Universal Adapter. Push the connector and turn clockwise until it's firmly seated.
3. Attach the ARC Control Cable to the adapter and tighten the connector nut.
4. Connect the ARC Control Cable to the Adapter Power Source.
5. Connect the Smart Reader or the Digital Connectivity Module (DCM) to the ARC Control Cable.
6. Connect the branch connector to the other power source terminal. Push the connector and turn clockwise until it's firmly seated.
7. Connect the voltage sensing cable:
  - a) With the ARC Universal Adapter -CV model, connect the voltage sensing cable between the branch connector and the Adapter Power Source.
8. Connect the TIG welding torch either to the special connector (8a) or to the branch connector (8b) according to the welding machine manufacturer's instructions.
9. Install the plug and plug in the Adapter Power Source to a 220 – 415 V wall socket. Alternatively the Adapter Power Source can be connected to the mains connector inside the power source.
10. Test that the system works.

**⚠ Do not use this connection with TIG welding machines, where ignition high voltage is applied between connectors 1 and 6.**

**b)** With the ARC Universal Adapter -TIG model, connect the voltage sensing cable between the branch connector and the adapter. This model is designed to be used with high voltage ignition.



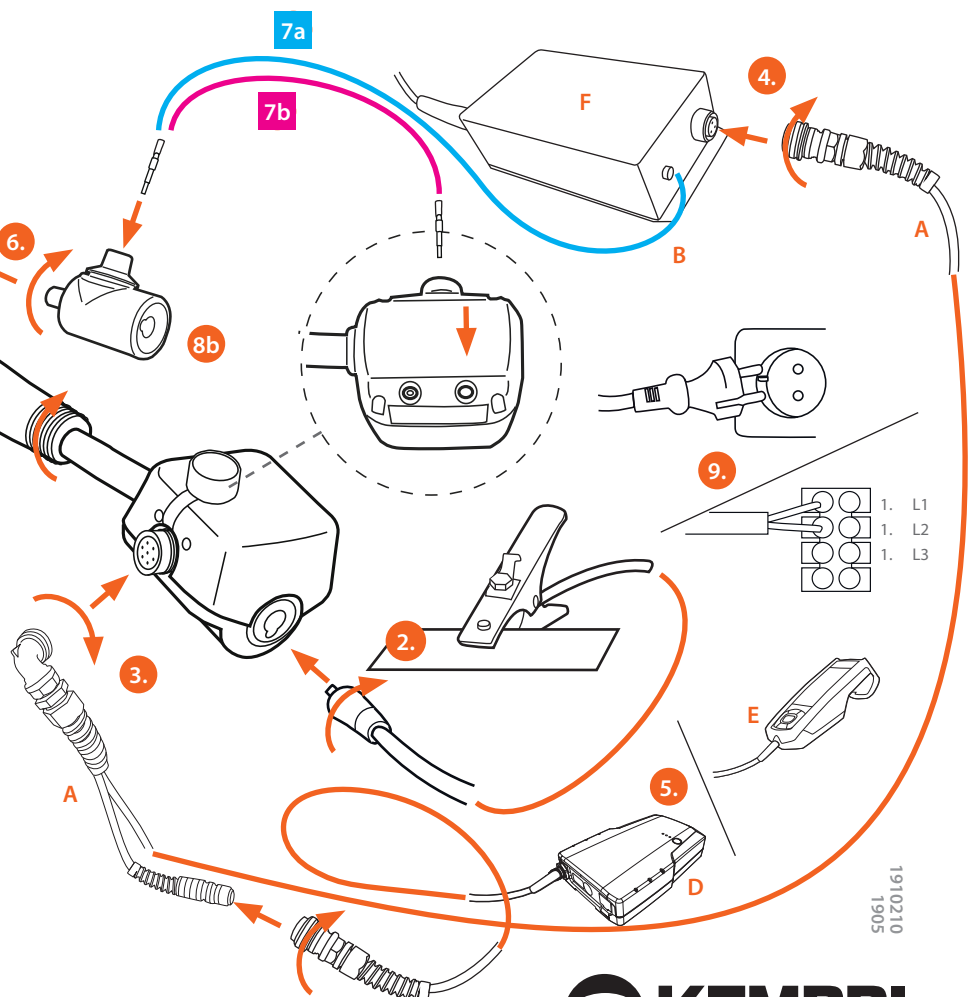
**i** The plug installation and all installations inside Kemppi welding machines may be carried out only by an authorized electrician.

The maximum allowed welding current is 500 A.

The 'CV' model cannot be used so that high ignition voltage goes through the adapter. In such cases use always the 'TIG' model.

The 'CV' stands for the qualities being measured (Current and Voltage).

A.	Arc control cable	
	2 m	6185940
	25 m	6185941
	50 m	6185942
B.	Voltage sensing cable	
	1.5 m	SP007898
C.	Universal Sensor MMA KIT	SP008897
D.	Digital Connectivity Module (DCM)	6265051
E.	Smart Reader	6265043
F.	Adapter power source	6185950



1910210  
1905